

S.P.S.

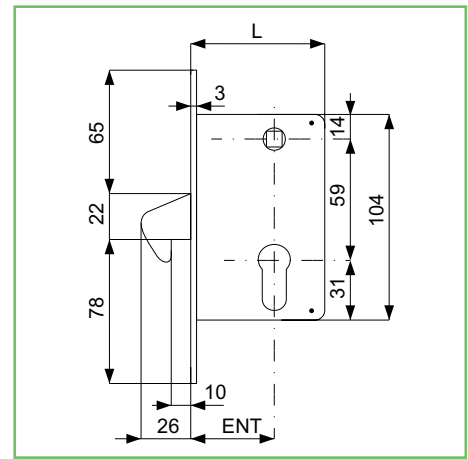
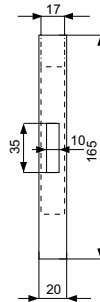


Serratura MG a gancio

- . Serrature da infillare per scorrevoli.
- . Finitura zincata.
- . Frontale in ferro ottonato verniciato mm. 20.
- . Gancio sporgente, quadro maniglia mm. 8.
- . Fornite di cilindro sagomato 015.56.0.



555



Codice SPS

Articolo

Entrata mm.

Frontale mm.

Scatola mm.

Imb.

UM

EAN

SMG555.30.0

555300

30

20x165

59x104

2

PZ



SMG555.50.0

555500

50

20x165

79x104

2

PZ

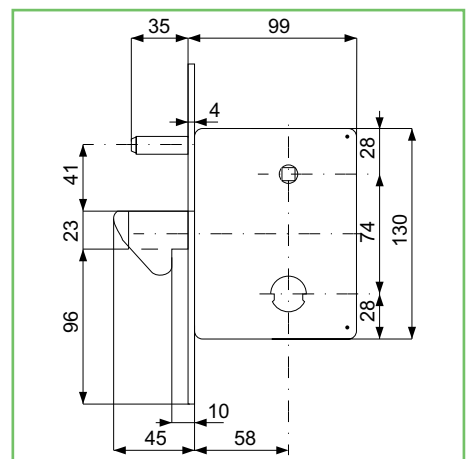
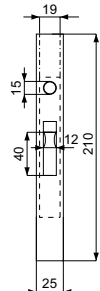


Serratura MG per cancelli

- . Serrature per cancelli scorrevoli.
- . Finitura zincata.
- . Gancio sporgente.
- . Fornite di cilindro.
- . Quadro maniglia mm. 8.



573



Codice SPS

Articolo

Entrata mm.

Frontale mm.

Scatola mm.

Imb.

UM

EAN

SMG573.58.0

573580

58

25x210

99x130

2

PZ

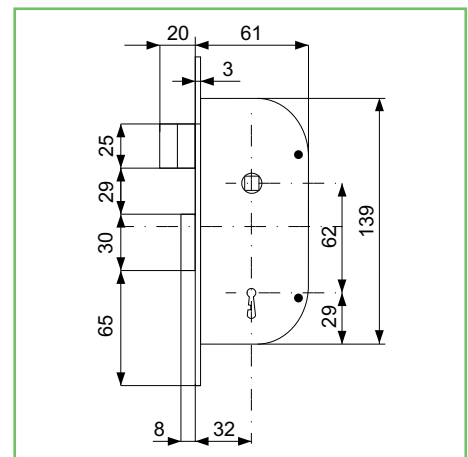
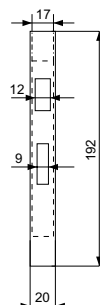


Serratura MG cancelli entrata mm. 32

- . Serratura zincata con chiave patent per cancelli.
- . 2 mandate e scrocco.
- . Quadro maniglia lato mm. 8.



145



Codice SPS

Articolo

Entrata mm.

Frontale mm.

Scatola mm.

Imb.

UM

EAN

SMG145.32.0

145320

32

20x192

61x139

4

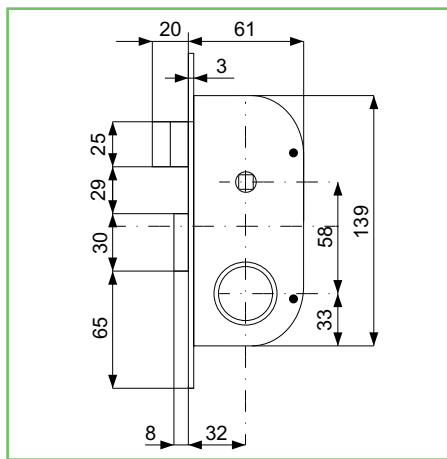
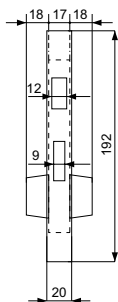
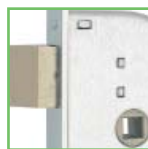
PZ





Serratura MG con cilindro fisso entrata mm. 32

- . Serratura da infilare per cancelli.
- . Con cilindro 013.20.0.
- . Frontale e scatola in acciaio zincato.
- . 2 mandate e scrocco, catenacci in ottone.
- . Quadro maniglia mm. 8.



Codice SPS

Articolo

Entrata mm.

Frontale mm.

Scatola mm.

Imb. UM

EAN

SMG147.32.0

147320

32

20x192

61x139

2

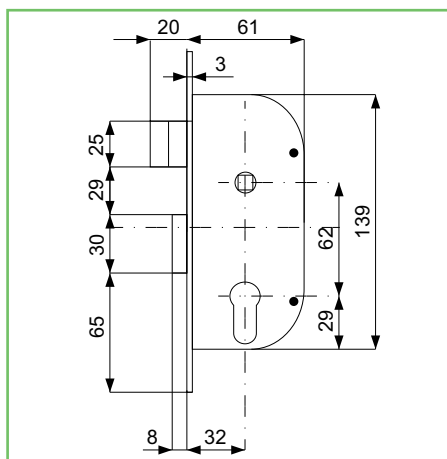
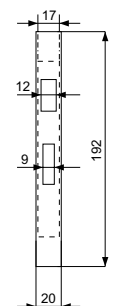
PZ



147

Serratura MG con cilindro sagomato entrata mm. 32

- . Serratura da infilare per cancelli.
- . Con cilindro 015.56.0.
- . Frontale e scatola in acciaio zincato.
- . 2 mandate e scrocco, catenacci in ottone.
- . Quadro maniglia mm. 8.



Codice SPS

Articolo

Entrata mm.

Frontale mm.

Scatola mm.

Imb. UM

EAN

SMG148.32.0

148320

32

20x192

61x139

2

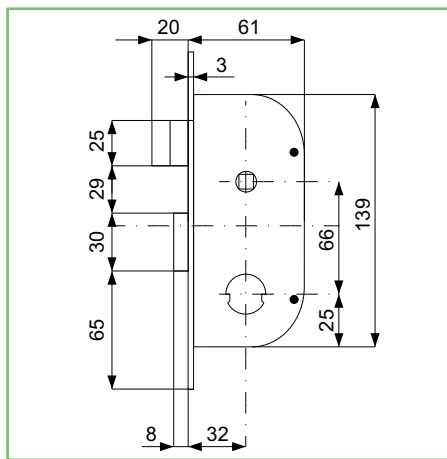
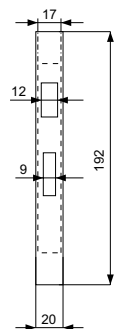
PZ



148

Serratura MG con cilindro tondo

- . Serratura da infilare per cancelli.
- . Con cilindro 019.56.0, diametro mm. 26.
- . Frontale e scatola in acciaio zincato.
- . 2 mandate e scrocco, catenacci in ottone.
- . Quadro maniglia mm. 8.



Codice SPS

Articolo

Entrata mm.

Frontale mm.

Scatola mm.

Imb. UM

EAN

SMG149.32.0

149320

32

20x192

61x139

2

PZ



149

397

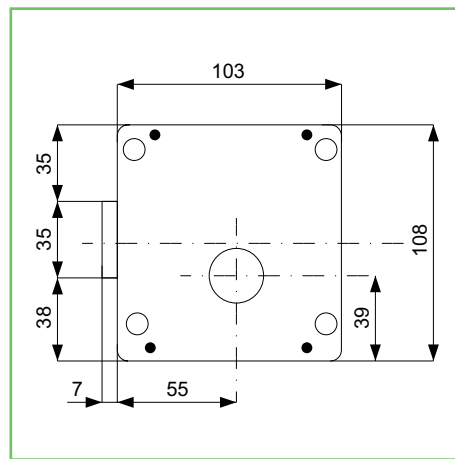
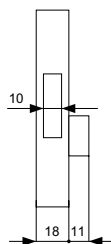


Serratura MG da applicare

- . Serrature da applicare.
- . Con cilindro 008.11.0
- . Scatola in acciaio zincato.
- . Catenaccio in ottone.
- . 2 mandate.



425



Codice SPS	Articolo	Entrata mm.	Mano	Scatola mm.	Imb.	UM	EAN
SMG425.55.1	425551	55	dx	108x103	2	PZ	8 011708 023637
SMG425.55.2	425552	55	sx	108x103	2	PZ	8 011708 023644

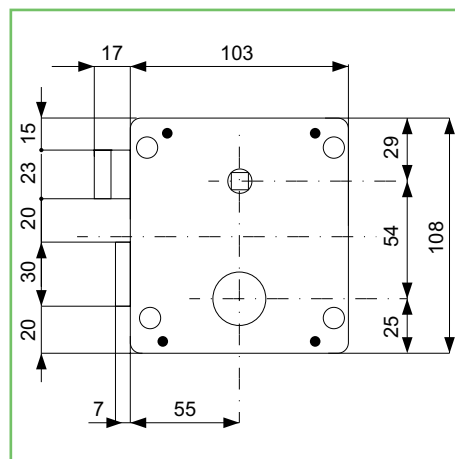
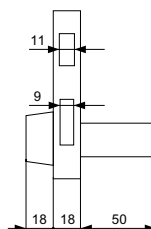
Serratura MG da applicare

- . Serrature da applicare.
- . Con cilindro 014.50.0
- . Scatola in acciaio zincato.
- . Catenacci in ottone.
- . 2 mandate e scrocco reversibile.
- . Quadro maniglia mm. 8.



DX

436

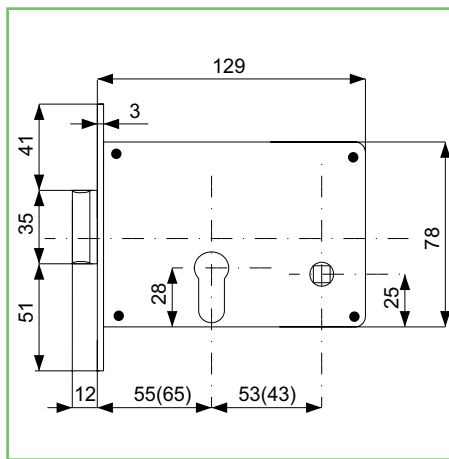
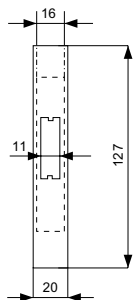


Codice SPS	Articolo	Entrata mm.	Mano	Scatola mm.	Imb.	UM	EAN
SMG436.55.1	436551	55	dx	108x103	2	PZ	8 011708 031618
SMG436.55.2	436552	55	sx	108x103	2	PZ	8 011708 031625



Serratura MG fasce mm. 65

- . Serratura infilare per fasce.
- . Con cilindro 015.56.0
- . Frontale e scatola in acciaio zincato.
- . 1 mandata a scrocco, catenaccio in ottone.
- . Quadro maniglia lato mm. 8.



312

Codice SPS

Articolo

Entrata mm.

Frontale mm.

Scatola mm.

Imb.

UM

EAN

SMG312.55.0

312550

55

20x127

78x129

2

PZ



SMG312.65.0

312650

65

20x127

78x129

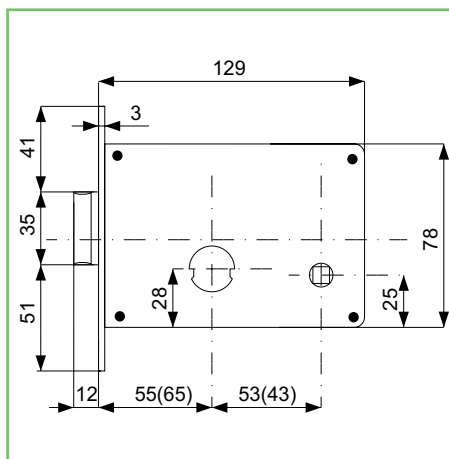
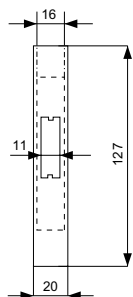
2

PZ



Serratura MG a fascia

- . Serratura infilare per fasce, finitura zincata.
- . Fornite di cilindro tondo.
- . 1 mandata e scrocco.
- . Quadro maniglia lato mm. 8.



313

Codice SPS

Articolo

Entrata mm.

Frontale mm.

Cilindro Ø mm.

Imb.

UM

EAN

SMG313.55.0

313550

55

20x127

26

2

PZ



SMG313.65.0

313650

65

20x127

26

2

PZ



SMG313.65.2

313652

65

20x127

22

2

PZ



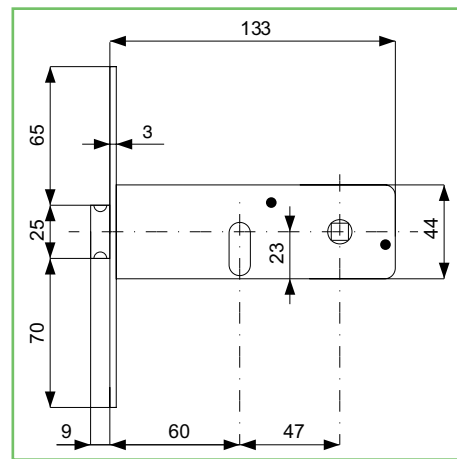
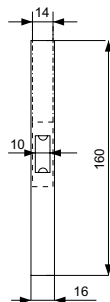


Serratura MG fascia

- . Serrature per fasce.
- . Finitura zincata.
- . 2 mandate a scrocco.
- . Fornite di cilindro ovale.
- . Quadro maniglia lato mm. 8.



800



Codice SPS

Articolo

Entrata mm.

Frontale mm.

Scatola mm.

Imb.

UM

EAN

SMG800.60.1

800601

60

16x160

44x133

2

PZ

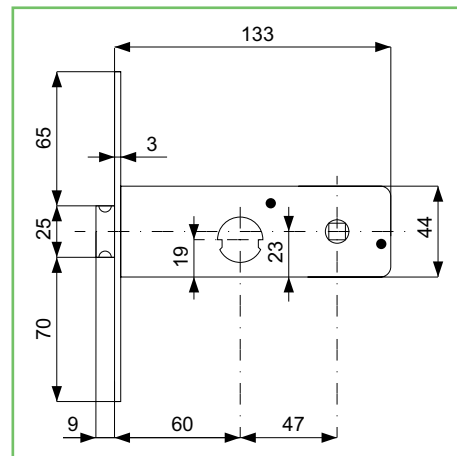
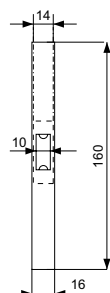


Serratura MG fascia

- . Serrature da infilare per fasce.
- . Con cilindro 020.52.0 diametro mm. 22.
- . Catenaccio in ottone.
- . 2 mandate a scrocco.
- . Quadro maniglia lato mm. 8.



801



Codice SPS

Articolo

Entrata mm.

Frontale mm.

Scatola mm.

Imb.

UM

EAN

SMG801.60.1

801601

60

16x160

44x133

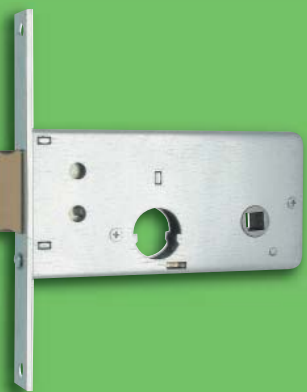
2

PZ

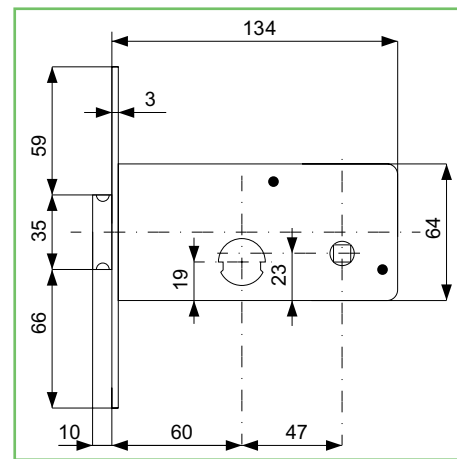
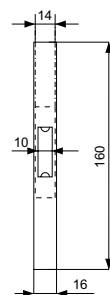


Serratura MG fascia

- . Serrature per fasce.
- . Finitura zincata.
- . 2 mandate a scrocco.
- . Fornite di cilindro tondo mm. 22 art. 020.52.0.
- . Quadro maniglia lato mm. 8.



805



Codice SPS

Articolo

Entrata mm.

Frontale mm.

Scatola mm.

Imb.

UM

EAN

SMG805.60.1

805601

60

16x160

64x134

2

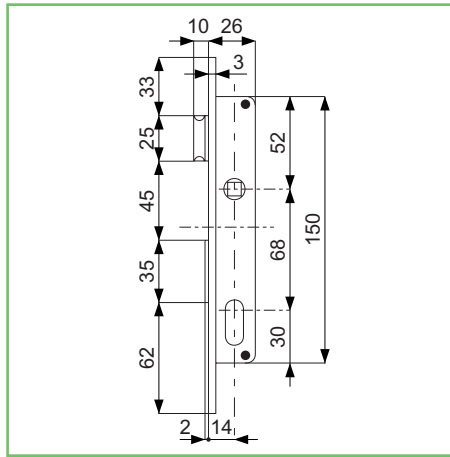
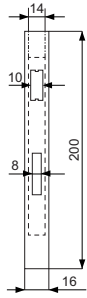
PZ



400

Serratura MG per montanti

- . Serrature per montanti.
- . Finitura zincata.
- . 1 mandata a scrocco.
- . Fornite di cilindro ovale art. 018.56.0.
- . Quadro maniglia lato mm. 8.



Codice SPS	Articolo	Entrata mm.	Frontale mm.	Scatola mm.	Imb.	UM	EAN
SMG911.14.1	911141	14	16x200	26x150	2	PZ	8 011708 024252



911